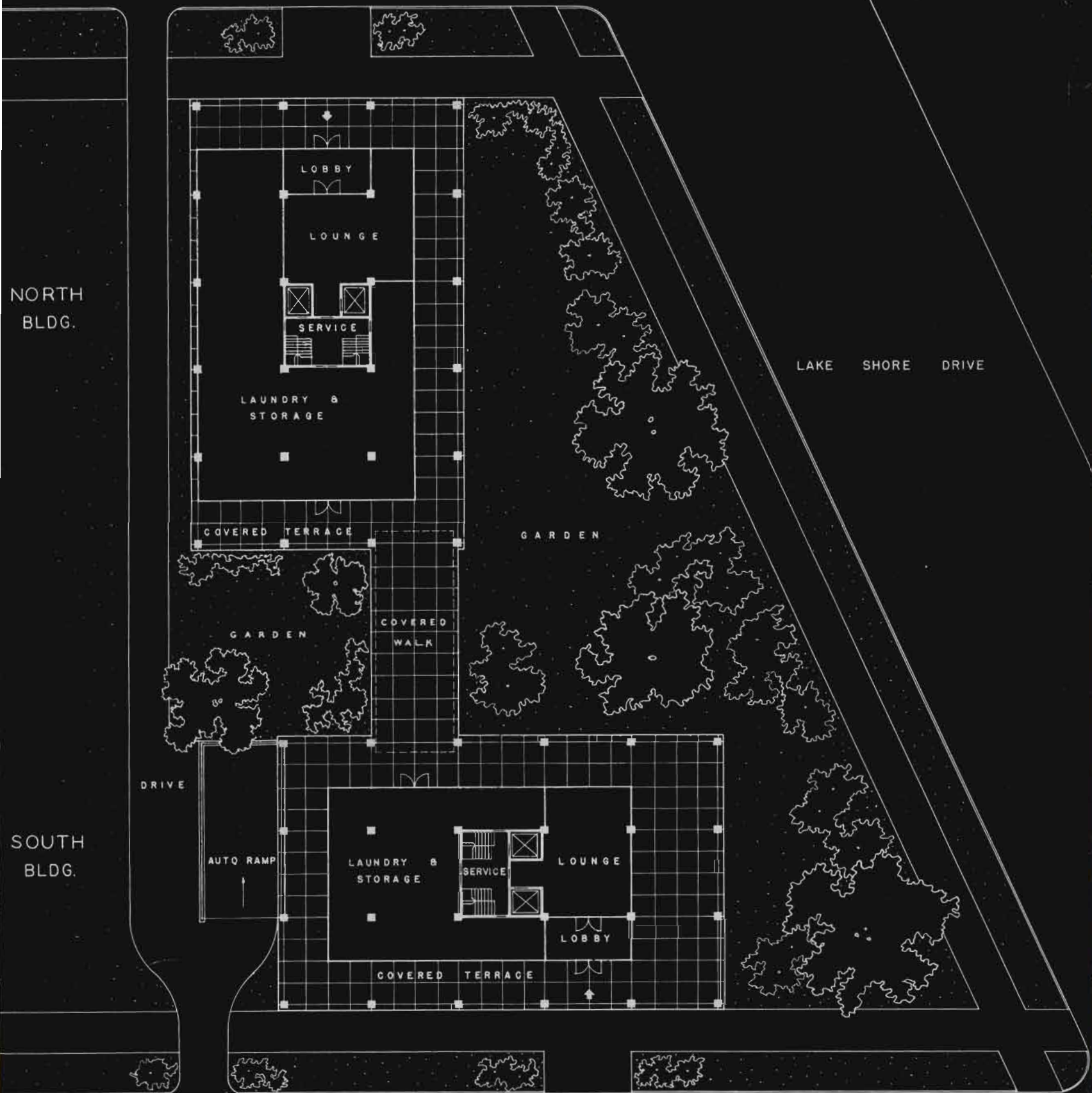


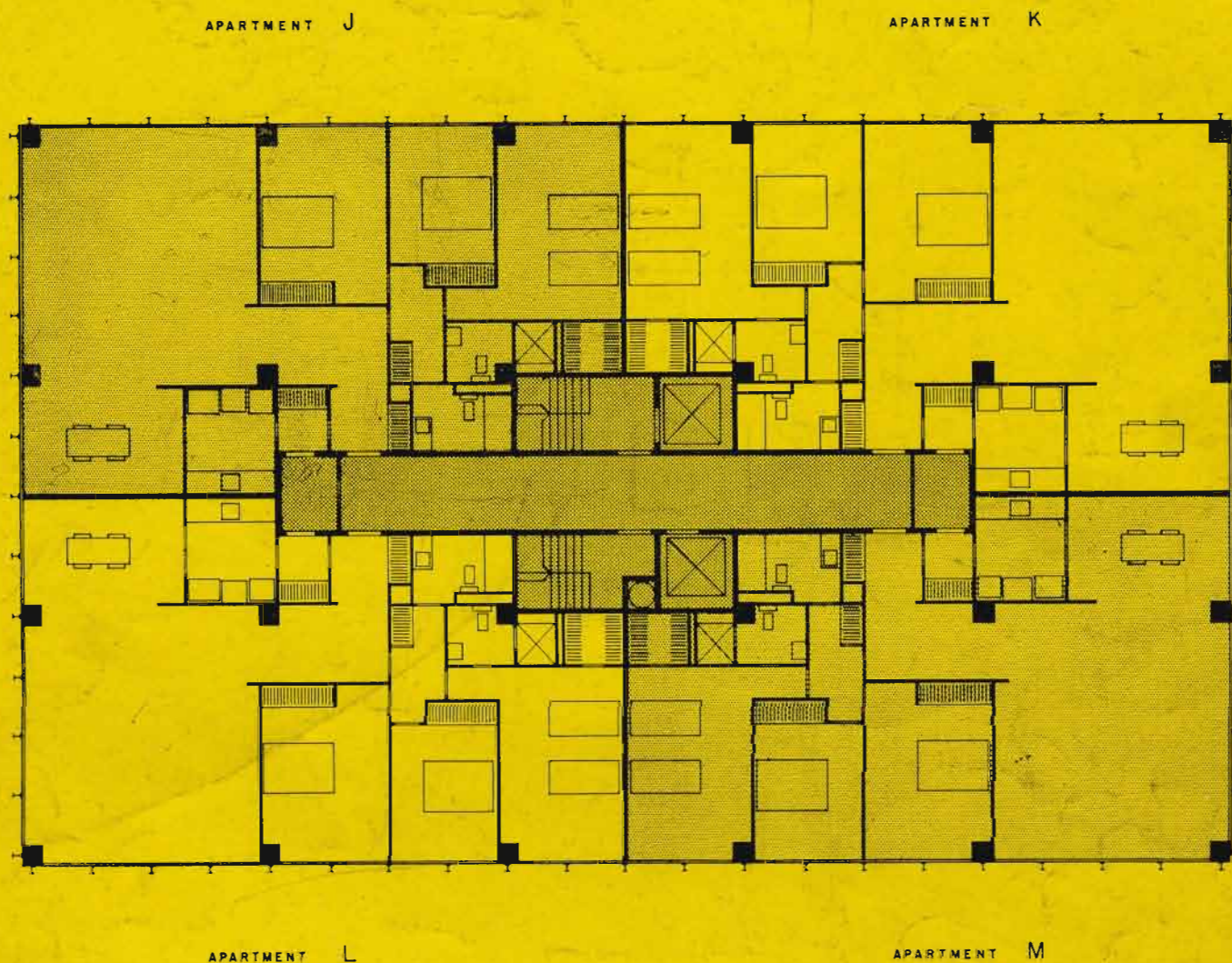


860-880
LAKE SHORE DRIVE

E. DELAWARE PLACE

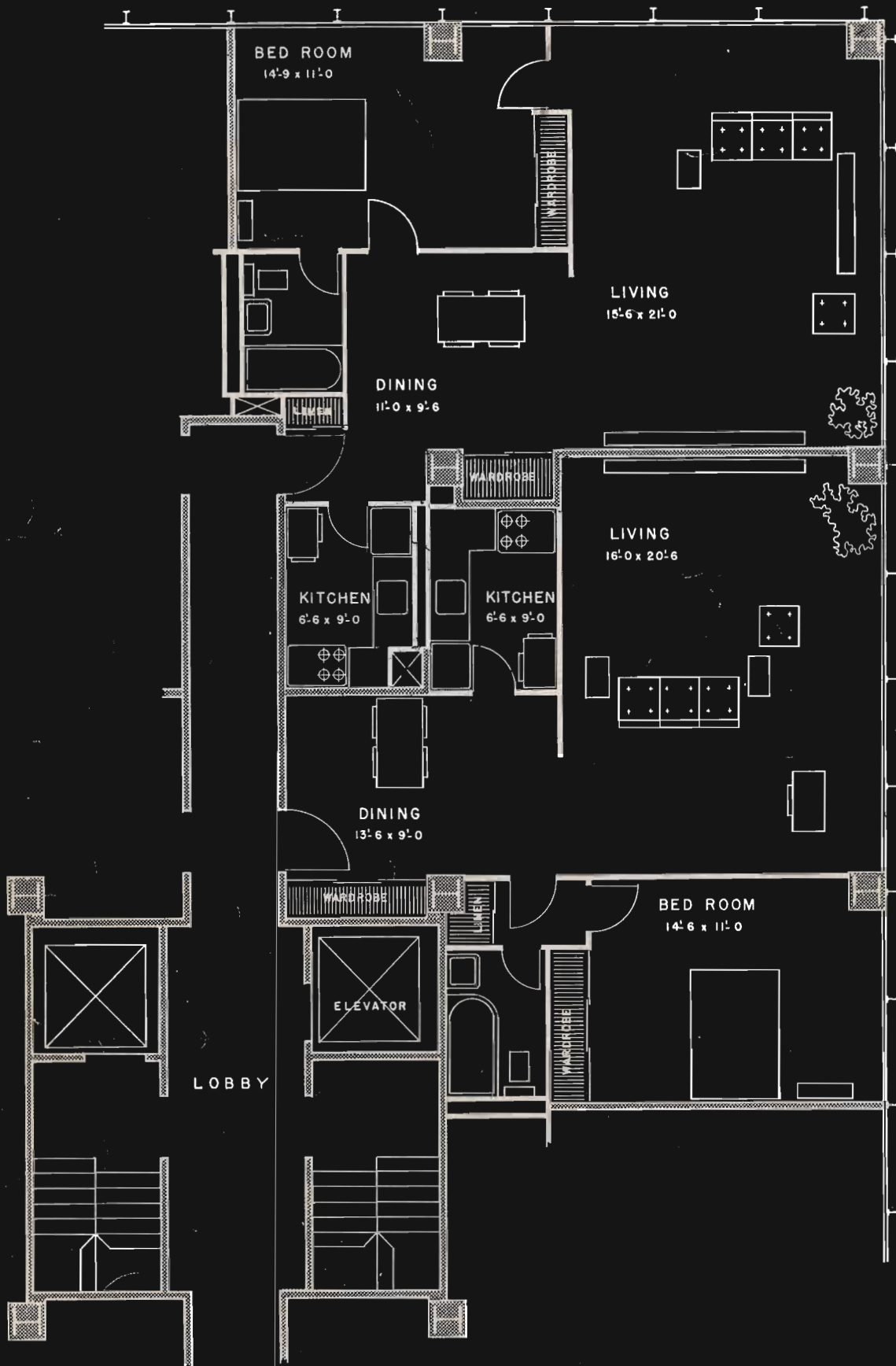


GROUND FLOOR PLAN



TYPICAL FLOOR PLAN - SOUTH BLDG.

These impressive structures are in an equally impressive environment of spacious garden area and covered promenades on the outside matched by generous lobby facilities on the inside. Below ground space has been allotted for 100 cars. In addition, complete electric laundries, frozen food lockers and ample secondary storage space add utility to the luxurious motif predominant throughout.



APT. "A"
D, E, & H SIMILAR

APT. "B"
C, F, & G SIMILAR

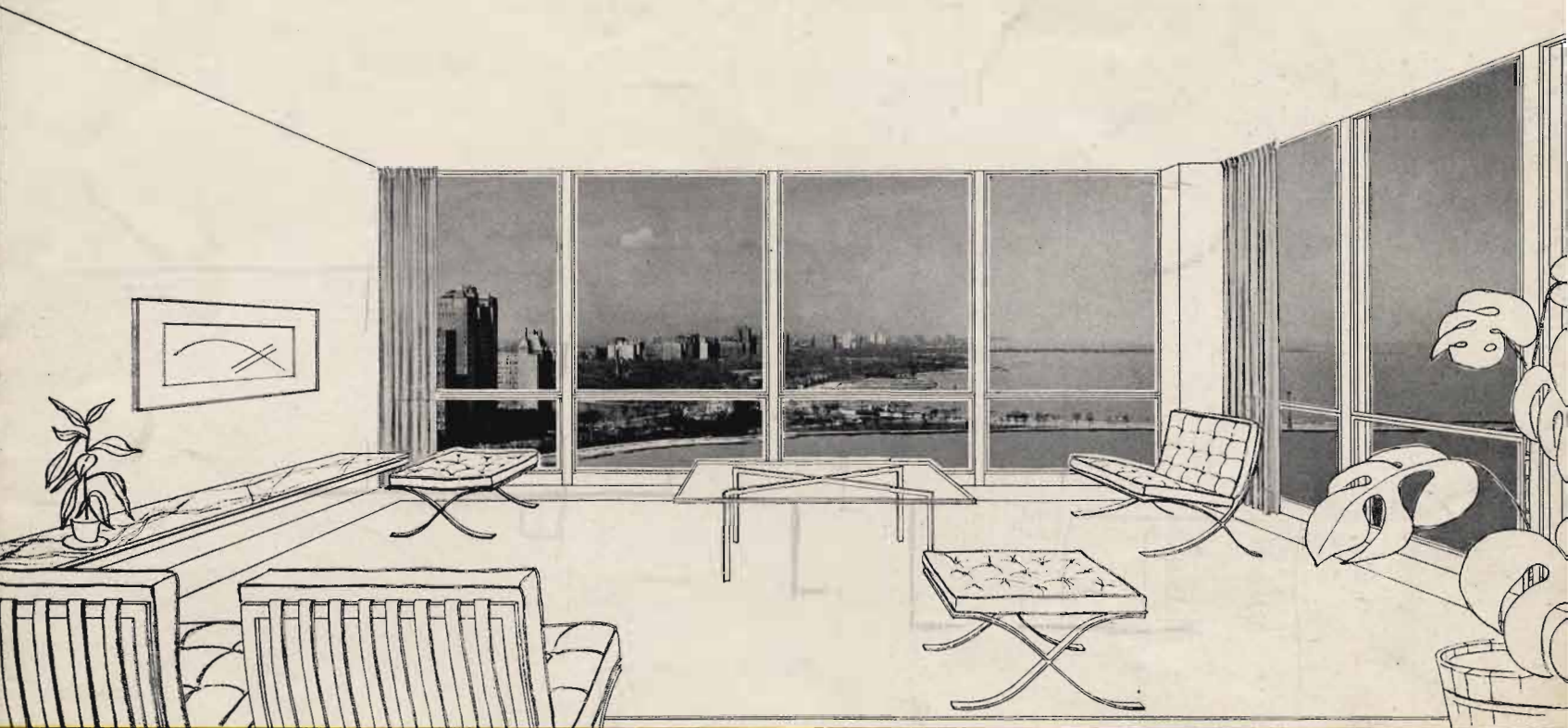
TYPICAL APARTMENTS

-

NORTH BLDG.

NORTH





Skilled planning utilizes every square inch of space in the apartments to maximum efficiency. The result is a feeling of spaciousness and airiness that cannot be conveyed by mere dimensions on a blue print.

Observe, for instance, the typical living room above—with its magnificent picture windows looking out over the Lake Shore. They are of thick plate glass and are housed in specially designed aluminum frames. The lower section is a hopper vent and the large upper section swings on a pivot and can be reversed for ease in cleaning. Both can be opened for ventilation.

While modern in feeling, these apartments do not necessarily call for modern style furniture. The design is so simple, so clean, so uncluttered by meaningless detail, that it harmonizes beautifully with traditional or any other style of furniture and decoration.

Head of the group of architects and engineers building 860 Lake Shore Drive is Ludwig Mies van der Rohe, world-renowned for his creative genius in modern housing architecture. His flair for combining functionalism with simple dignity, elegance, and beauty is revealed at its best in 860 Lake Shore Drive.

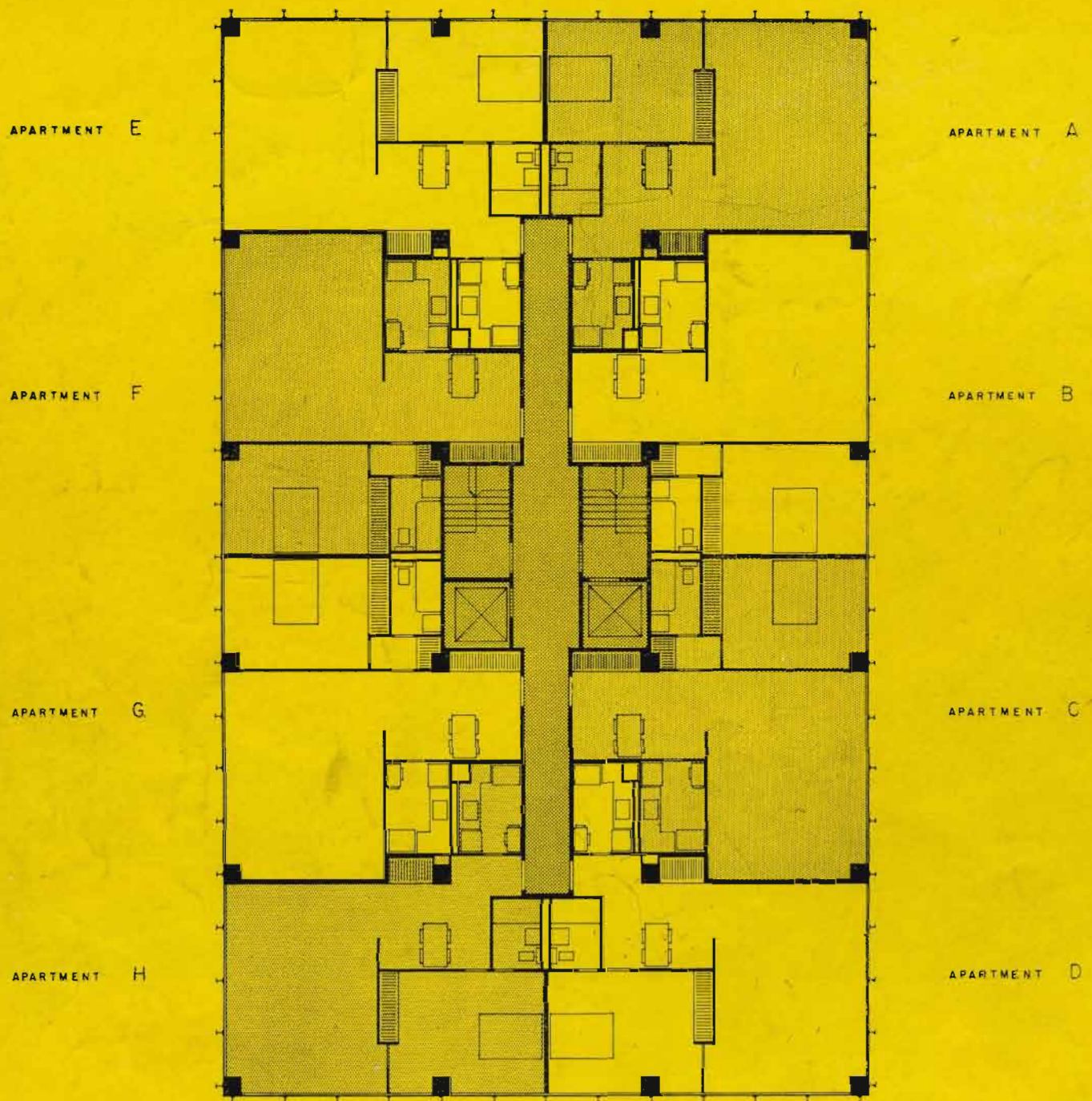




CHICAGO'S FINEST LOCATION

With a spectacular upsweep of glass and steel, 860 Lake Shore Drive brings to Chicago a dramatic new concept in modern apartment design. The distinction and convenience of the location on a block-long site overlooking the Lake, between East Delaware Place and East Chestnut Street, speak for themselves.

**860-880
LAKE SHORE DRIVE**

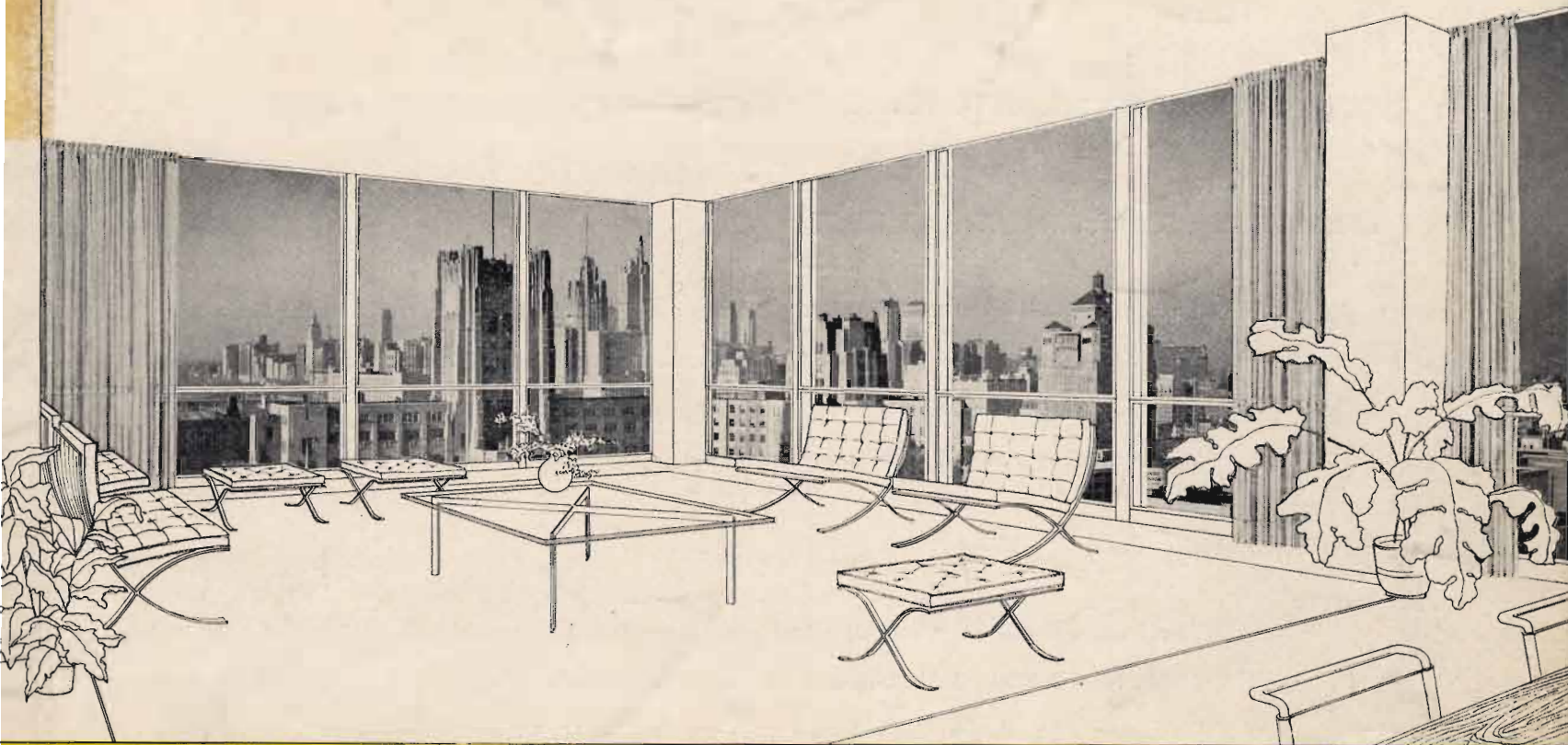


TYPICAL FLOOR PLAN - NORTH BLDG

NORTH



These typical floor plans show the $3\frac{1}{2}$ room apartments in the North Building and the 6-room apartments in the South Building. Note the symmetrical design of both buildings which not only permits economy in construction but also makes full use of the abundant light and breeze and the exhilarating view inherent in the location.



On the left is a typical 6-room apartment layout. Above you see a typical living room with its breath-taking sweep of floor-to-ceiling picture windows on two sides. Note particularly the absence of a partition between the living and dining room. This makes the two rooms (including their windows) one continuous unit and beautifully enhances the over-all spaciousness.

The radiant heating system in both buildings marks a welcome advance in modern living comfort. This is concealed within the ceiling and the base of the windows. No exposed radiators cluttering valuable floor space. No dirt to clean. You get constant, clean heat; and you can control it through an individual thermostat in your own apartment.

The compact kitchen, featuring all-electric equipment and ample steel cabinets, is designed for convenience and step-saving. A forced air exhaust provides automatic ventilation for kitchen as well as bath rooms.

Built-in, sliding door wardrobes and storage closets are above the average in size. These and many other distinctive appointments make for maximum space utilization and assure a home designed for gracious, comfortable living.

MUTUAL OWNERSHIP OFFERING STABILITY AT THE LOWEST POSSIBLE COST

APPLICATION FOR APARTMENT AND LEASE

A moderate initial investment gives you a certificate of Beneficial Interest in the 860 Lake Shore Drive Trust. At the same time you get a lease for the apartment of your choice. To maintain the highest standard of tenancy, all leases must be approved by the 3 Managing Trustees who represent the mutual owners. Your lease when accepted is continuous at your option and cannot be cancelled except for cause.

YOUR MONTHLY COST

Your lease will call for a monthly rental computed at prevailing market rates, LESS THE SAVINGS ACCRUING TO YOU AS AN OWNER. The rental you pay will depend upon the size and location of the apartment you choose. You will, thereby, obtain the maximum in rental value together with an increase in your membership equity each and every month.

YOUR SECURITY OF OWNERSHIP

Your certificate cannot be assessed, nor is it subject to any liability. It is legally separate from your lease and may be sold or transferred as you wish. Your certificate rights are in no way altered or impaired should you desire to change your apartment or sublet to any desirable tenant. Another important factor that protects your ownership is . . .

SOUND, CAPABLE MANAGEMENT

Your property will be administered by a Board of Managing Trustees under a Trust Agreement written in your interest. These Trustees have been selected because of their integrity, experience and confidence in this project. Their function is to see that the property is built on a sound basis and to call upon the best in management talent to operate it after completion. You will thus be relieved of the onerous details incident to the daily operation of the building while retaining an assurance that your interests are fully and adequately maintained.

FOR FURTHER INFORMATION APPLY

ROBERT H. McCORMICK, JR., Sales Agent

332 S. Michigan Avenue

HArrison 7-0925

860-880 LAKE SHORE DRIVE

860 LAKE SHORE DRIVE TRUST

MANAGING TRUSTEES

Ross J. Beatty, Jr.

George F. Brown

[REDACTED]

Wm. C. Waggoner

ASSOCIATED ARCHITECTS AND ENGINEERS

Mies van der Rohe

Pace Associates

Holsman, Holsman,

Klekamp & Taylor

STRUCTURAL ENGINEER

Frank J. Kornacker

LEGAL COUNSEL

Isham, Lincoln & Beale

CORPORATE TRUSTEE

The Trust Company
of Chicago

DEVELOPER AND SERVICE AGENT

Herbert S. Greenwald
332 S. Michigan Avenue
HARRISON 7-1645

SALES AGENT

Robert H. McCormick, Jr.
332 S. Michigan Avenue
HARRISON 7-0925

